

Table of Contents

Inserts.....	3
Short Shank.....	4
Reducing Bushings.....	4
Couplers.....	4
Adapters.....	5
Elbows.....	6-7
Tees.....	8-9
Menders.....	7
Washers.....	8
Close Nipples.....	8
Caps.....	8
Plugs.....	8
Push-on Fittings.....	9
Agricultural Fittings.....	9-10
Pinch-On Clamps.....	11
Stepless® Ear Clamps.....	11
Oetiker® Clamp Tools.....	11

Properties of Tuff-Lite Materials



Nylon fittings should not be used with acid-based fertilizers, bromine, chlorine, fluorine, hydrochloric acid, iodine, nitric acid, phosphoric acid, sulfuric acid or xylene. Made with material approved by FDA. Nylon should not be used with compressed gas. Parts are white.

Polypropylene fittings should not be used with aromatic hydrocarbons, carbon tetra-chloride, gasoline, hexane, kerosene, nitric acid, sodium hydrochlorite, toluene, trichloroethylene or xylene. Polypropylene should not be used with compressed gas. Parts are black.

Male Inserts

- Parts showing package quantities are sold in package quantities only.

hose shank x male NPT

Hose Shank	Male NPT	Nylon Part #	Pkg Qty	Polypropylene Part #	Pkg Qty
1/4"	1/8"	TN21	50	PPN21	50
	1/4"	TN22	50	PPN22	50
	3/8"	TN23	50	PPN23	50
	1/2"	TN24	50	PPN24	50
	3/4"	TN26	50	---	--
	1"	TN28	50	---	--
5/16"	1/4"	TN252	50	---	--
3/8"	1/8"	TN31	50	PPN31	50
	1/4"	TN32	50	PPN32	50
	3/8"	TN33	50	PPN33	50
	1/2"	TN34	50	PPN34	50
	3/4"	TN36	50	PPN36	50
1/2"	1/8"	TN41	50	---	--
	1/4"	TN42	50	PPN42	50
	3/8"	TN43	50	PPN43	50
	1/2"	TN44	50	PPN44	50
	3/4"	TN46	50	PPN46	50
5/8"	3/8"	TN53	50	---	--
	1/2"	TN54	50	PPN54	50
	3/4"	TN56	50	PPN56	50
3/4"	3/8"	TN63	50	---	--
	1/2"	TN64	50	PPN64	50
	3/4"	TN66	50	PPN66	50
	1"	TN68	25	PPN68	25
1"	3/4"	TN86	25	PPN86	25
	1"	TN88	25	PPN88	25
1-1/4"	1"	TN158	15	---	--
	1-1/4"	TN150	10	PPN150	10
	1-1/2"	TN1520	10	---	--
1-1/2"	1-1/4"	TN2015	10	---	--
	1-1/2"	TN200	10	PPN200	10
2"	2"	TN250	5	PPN250	5



nylon



polypropylene

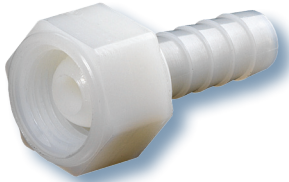
Female Inserts

hose shank x female NPT

Hose Size	Female NPT	Nylon Part #
1/4"	1/4"	TFS22
1/4"	1/2"	TFS42
1/2"	1/2"	TFS44
3/4"	3/4"	TFS66



Tuff-Lite Female Barbed Fittings



hose shank x female NPSM
ball seat type

Hose Size	Female NPSM	Nylon Part #
1/4"	1/4"	TF22
3/8"	3/8"	TF33

Short Shank Couplings

- Parts showing package quantities are sold in package quantities only.
- female shipped with a red vinyl washer, (**TVW7**)

nylon short shank couplings



nylon

Hose Shank	Thread Size	female Part #	male Part #	Pkg Qty
1/4"	3/4" NPSM	TCF62	TN26	50
3/8"	3/4" NPSM	TCF63	TN36	50
1/2"	3/4" NPSM	TCF64	TN46	50
5/8"	3/4" NPSM	TCF65	TN56	50
3/4"	3/4" NPSM	TCF66	TN66	50
1/4"	3/4" GHT	TCF72	TCM72	--
3/8"	3/4" GHT	TCF73	TCM73	--
1/2"	3/4" GHT	TCF74	TCM74	--
5/8"	3/4" GHT	TCF75	TCM75	--
3/4"	3/4" GHT	TCF76	TCM76	--

- female shipped with a red vinyl washer, (**TVW7**)

polypropylene short shank couplings

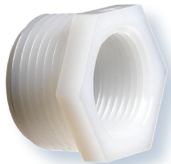


polypropylene

Hose Shank	Thread Size	female Part #	male Part #
1/4"	3/4" GHT	PPCF72	---
3/8"	3/4" GHT	PPCF73	PPCM73
1/2"	3/4" GHT	PPCF74	PPCM74
5/8"	3/4" GHT	PPCF75	PPCM75
3/4"	3/4" GHT	PPCF76	PPCM76

Reducing Bushings

male NPT x female NPT



Male NPT	Female NPT	Nylon Part #
3/8"	1/4"	THB32
1/2"	1/4"	THB42
1/2"	3/8"	THB43
3/4"	1/2"	THB64
1"	3/4"	THB86

Couplers

- Parts showing package quantities are sold in package quantities only.

female NPT x female NPT



Female NPT	Female NPT	Nylon Part #	Pkg Qty
1/2"	1/2"	TA994	25
3/4"	3/4"	TA996	25

Tuff-Lite

Male GHT x Female NPT Adapters

- Parts showing package quantities are sold in package quantities only.

male GHT x female NPT

Female NPT	Nylon		Polypropylene	
	Part #	Pkg Qty	Part #	Pkg Qty
1/4"	TA792	50	PPA792	50
3/8"	TA793	50	---	--
1/2"	TA794	50	PPA794	50
3/4"	TA796	50	PPA796	25



nylon



polypropylene

Female GHT x Male NPT Adapters

- Parts showing package quantities are sold in package quantities only.

female GHT x male NPT

Male NPT	Nylon		Pkg Qty
	Part #		
1/4"	TA972		50
3/8"	TA973		50
1/2"	TA974		50
3/4"	TA976		50



Male GHT x Male NPT Adapters

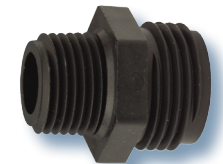
- Parts showing package quantities are sold in package quantities only.

male GHT x male NPT

Male NPT	Nylon		Polypropylene	
	Part #	Pkg Qty	Part #	Pkg Qty
1/4"	TA772	50	---	--
3/8"	TA773	50	PPA773	50
1/2"	TA774	50	PPA774	50
3/4"	TA776	50	PPA776	50
1"	TA778	25	---	--



nylon



polypropylene

Male NPT x Female Swivel Adapters

- female shipped with a red vinyl washer, (**TVW7**)

male NPT x female threaded swivel nut

Male NPT	Female Thread	Nylon	
		Part #	
1/4"	3/4" GHT	TSA72	
3/8"	3/4" GHT	TSA73	
1/4"	3/4" NPS	TSA62	
3/8"	3/4" NPS	TSA63	



Nuts

female threaded swivel nuts

Thread Size	Nylon	
	Part #	
3/4" NPS	TCF6	
3/4" GHT	TCF7	



Tuff-Lite Female NPT x 90° Hose Barb Elbows



female NPT x 90° hose barb

Hose Size	Female NPT	Nylon Part #
1/2"	1/2"	TLFS44
1/2"	3/4"	TLFS64
3/4"	3/4"	TLFS66

Male NPT x 90° Hose Barb Elbows

- Parts showing package quantities are sold in package quantities only.

male NPT x 90° hose barb



Hose Size	Male NPT	Nylon Part #	Pkg Qty
1/4"	1/8"	TLS21	50
	1/4"	TLS22	50
	3/8"	TLS23	50
3/8"	1/8"	TLS31	50
	1/4"	TLS32	50
	3/8"	TLS33	50
	1/2"	TLS34	50
1/2"	3/4"	TLS36	50
	1/4"	TLS42	50
	3/8"	TLS43	50
	1/2"	TLS44	50
5/8"	3/4"	TLS46	25
	1"	TLS48	25
	3/8"	TLS53	25
	1/2"	TLS54	25
3/4"	3/4"	TLS56	25
	1"	TLS58	25
	3/8"	TLS63	25
	1/2"	TLS64	25
1"	3/4"	TLS66	25
	1"	TLS68	15
	3/4"	TLS86	15
	1"	TLS88	15

Street Elbows

female NPT x 90° male NPT



Female NPT	Male NPT	Nylon Part #
1/4"	1/4"	TSE22
1/2"	1/2"	TSE44
3/4"	3/4"	TSE66

GHT x Male NPT Elbows

- Parts showing package quantities are sold in package quantities only.

male NPT x male GHT



Male NPT	Nylon Part #	Pkg Qty
3/8"	TLT73	25
1/2"	TLT74	25
3/4"	TLT76	25

Tuff-Lite Hose x Hose Elbows

- Parts showing package quantities are sold in package quantities only.

hose barb x 90° hose barb

Hose Shank	Nylon Part #	Pkg Qty	Polypropylene Part #	Pkg Qty
1/4"	TLSS22	50	PPLSS22	50
3/8"	TLSS33	50	PPLSS33	50
1/2"	TLSS44	50	PPLSS44	50
3/4"	TLSS66	50	PPLSS66	50



nylon



polypropylene

Hose x Male NPT Tees

- Parts showing package quantities are sold in package quantities only.

hose run x male NPT branch

Hose Size	Male NPT	Nylon Part #	Pkg Qty
1/4"	1/4"	TSST222	50
3/8"	3/8"	TSST333	50
1/2"	1/2"	TSST444	50
3/4"	3/4"	TSST666	25



Hose x Hose Tees

- Parts showing package quantities are sold in package quantities only.

hose run x hose branch

Hose Size	Nylon Part #	Pkg Qty
1/4"	TSSS222	50
3/8"	TSSS333	50
1/2"	TSSS444	50
3/4"	TSSS666	25



Menders

- Parts showing package quantities are sold in package quantities only.

hose shank x hose shank

Hose Size	Nylon Part #	Pkg Qty	Polypropylene Part #	Pkg Qty
1/4"	TM2	50	PPM2	50
5/16"	TM25	50	---	---
3/8"	TM3	50	PPM3	50
1/2"	TM4	50	PPM4	50
5/8"	TM5	50	PPM5	50
3/4"	TM6	50	PPM6	50
1"	TM8	25	PPM8	50



nylon



polypropylene



red vinyl



white rubber

Tuff-Lite Washers for Garden Hose Fittings

Description	Part #	Opt Qty
red vinyl	TVW7	100
white styrene butadiene rubber	TRW7	100

Close Nipples

- Parts showing package quantities are sold in package quantities only.

male NPT x male NPT



NPT Size	Nylon		Pkg Qty
	Part #		
1/4"	TCN202		50
3/8"	TCN303		50
1/2"	TCN404		50
3/4"	TCN606		50

Threaded Caps

- Parts showing package quantities are sold in package quantities only.

female NPT



Thread Size	Nylon		Pkg Qty
	Part #		
1/4" NPT	TTC2		50
3/8" NPT	TTC3		50
1/2" NPT	TTC4		50
3/4" NPT	TTC6		50
3/4" GHT	TTC7		50

Square Head Drain Plugs

- Parts showing package quantities are sold in package quantities only.

male NPT



Male NPT	Nylon		Pkg Qty
	Part #		
1/8"	TPS1		50
1/4"	TPS2		50
3/8"	TPS3		50
1/2"	TPS4		50
3/4"	TPS6		50
1"	TPS8		50
1 1/4"	TPS10		25

Hex Head Drain Plugs

- Parts showing package quantities are sold in package quantities only.

male NPT



Male NPT	Nylon		Pkg Qty
	Part #		
1/8"	TPX1		50
1/4"	TPX2		50
3/8"	TPX3		50
1/2"	TPX4		50
3/4"	TPX6		50
1"	TPX8		50
1 1/4"	TPX10		50

Tuff-Lite Push-On Male Inserts

- Parts showing package quantities are sold in package quantities only.
- No clamps are needed when these fittings are used with push-on hose.

push-on hose shank x male NPT

Hose Size	Male NPT	Nylon Part #	Pkg Qty
1/4"	1/8"	TPN21	50
	1/4"	TPN22	50
	3/8"	TPN23	50
3/8"	1/4"	TPN32	50
	3/8"	TPN33	50
	1/2"	TPN34	50
1/2"	3/8"	TPN43	50
	1/2"	TPN44	50
	3/4"	TPN46	50



Push-On Female Inserts

- Parts showing package quantities are sold in package quantities only.
- No clamps are needed when these fittings are used with push-on hose.

push-on hose shank x female NPT

Hose Size	Female NPT	Nylon Part #	Pkg Qty
1/4"	1/4"	TPF22	50
3/8"	1/4"	TPF32	50
	3/8"	TPF33	50
1/2"	3/8"	TPF43	50
	1/2"	TPF44	50



Push-On Menders

- Parts showing package quantities are sold in package quantities only.
- No clamps are needed when these fittings are used with push-on hose.

push-on hose shank x push-on hose shank

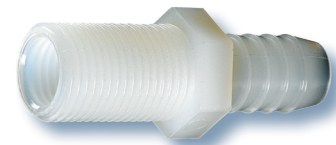
Hose Size	Nylon Part #	Pkg Qty
1/4"	TPM2	50
3/8"	TPM3	50
1/2"	TPM4	50



Agricultural Straight Fittings

agricultural male straight thread x hose barb

UN Thread	Hose Size	Nylon Part #
11/16-16	3/8"	38D
11/16-16	1/2"	3812D



Tuff-Lite Agricultural Elbows



agricultural male straight thread x 90° hose barb

UN Thread	Hose Size	Nylon Part #
11/16-16	3/8"	NTL38
11/16-16	1/2"	NTL12

Agricultural Tees

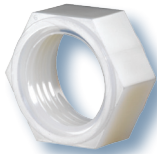


agricultural male straight thread branch x hose barb run

UN Thread	Hose Size	Nylon Part #
11/16-16	3/8"	NTT38
11/16-16	1/2"	NTT12

Agricultural Nozzle Nut

- fits all nozzle fittings with 11/16 straight thread



agricultural female threaded nozzle nut

UN Thread	Nylon Part #
11/16-16	B12NOZNUT

Agricultural Knurled Cap

- fits all nozzle fittings with 11/16 straight thread

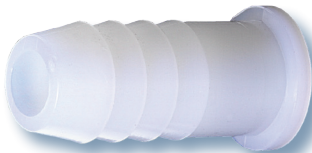


agricultural knurled cap

UN Thread	Nylon Part #
11/16-16	3942

Agricultural Barbed Nozzles

- use with agricultural swivel nut

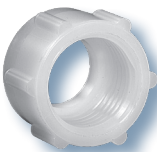


agricultural barbed nozzles

Hose Size	Nylon Part #
3/8"	K8438
1/2"	K8412

Agricultural Swivel Nut

- use with agricultural barbed nozzle



agricultural swivel nut

UN Thread	Nylon Part #
11/16-16	8027

Pinch-On Clamps

- single and double ear configurations
- available in zinc plated steel and 304 stainless steel
- single ear clamps available in nominal sizes 3/8" through 2"
- double ear clamps available in nominal sizes 3/16" through 1 1/2"
- When ordering double ear clamps, select nominal clamp size nearest to, but always larger than, the OD of material to be clamped after insert has been fitted.
- sold in bag quantities only



single ear



double ear

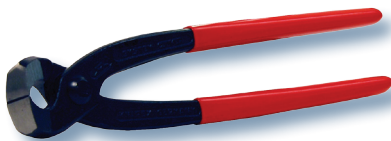
Stepless® Ear Clamps

- *Clamps are not reusable*; they should not be pried open, doing so renders the clamps nonfunctional.
- available in nominal sizes 9/32" through 13/16"
- To order select the nominal size nearest to, but always larger than, the outside diameter of the material to be clamped. The outside diameter should be determined with connection fully assembled.
- 304 stainless steel
- ensured clamping seal
- for low durometer and/or thin-walled hose/tubing
- for silicon, vinyl, polyurethane or other high-tech materials
- Smooth inner band prevents damage to the hose while the tongue-in-groove design provides a 360° seal.
- no steps or gaps inside the clamp
- Install clamps using 1098 or 1099 clamp tools below.
- sold in quantities of 100 per bag

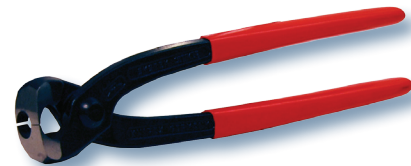
**SAFETY
ALERT**



Oetiker® Clamp Tools



1098 - standard jaw clamp tool



1099 - side jaw clamp tool

Dixon is recognized as the premier manufacturer and supplier of hose fittings and accessories spanning a wide range of industrial uses. Dixon's range includes products for food, dairy processing, beverage and brewery, mobile tankers, mining, construction, chemical processing, petroleum, oilfields, refining and manufacturing.

dixonvalve.com • *Customer Service:* **800.355.1991**



The Right Connection™

Dixon Valve

800 High Street, Chestertown, MD 21620

Fax: 800.283.4966